

IV. NOTES ON USE

1. Use mild detergents for cleaning and disinfection. Do not use corrosive or abrasive products!

NOTE: Do not use agents containing naphtha, solvents, acids, chlorine etc. for cleaning soft surfaces!

2. Product marking is performed in the form of an identification label attached to each device. The label contains the following information:

- number indicating the date of manufacture:
 - LOT: RRRR-MM (RRRR means the year, MM means the month, e.g.: 2023-01)
- name and type of product e.g.: REF: 06/MR
- allowed body weight of the user

3. **All devices (except for caps) have a 2-year warranty.**

4. **Use the devices as directed!** Any bending of the metal parts with visible cracks on the surface exclude the device from further use.

Check the device before and during use to ensure that it has no scratches, cracks, etc.

5. The production service during the warranty period (24 months) includes replacement of parts or products, which are found to have any manufacturing defects.
6. The MIKIRAD operational service functions directly at the points of sale of the products.
7. MIKIRAD guarantees the production of spare parts for 10 years from the date of manufacture of a product.

INSTRUCTIONS FOR USE AXILLARY CRUTCHES

MIKIRAD manufactures **axillary crutches** as medical devices for improving the mobility of people with disabilities (according to In-house Specification ZN-00/MK-01-04/2010 harmonised with standard PN-EN ISO 9999 – Class 12 03 and EUROPEAN COUNCIL DIRECTIVE 2017/745 [MDR] of 5 April 2017)

PN EN ISO 9999	NAME	TYPE
12 03 12	Axillary crutch - with extendable axillary support - with mobile handle	06/MR 07/MR

I. BACKGROUND

Standard products are designed for users (with lower limb disability or prostheses) with height of 155cm to 185cm and body weight of up to 120 kg.

Axillary crutches can be used individually or in pairs, one per arm (possibly involving the use of the upper part of the torso). These are intended for users with lower limbs or lower limb prostheses functional for support. Indicated for full or major disability of one of the lower limbs.

Each product is adapted to the user's height by moving the interconnected telescopic rods to obtain the desired height, and then locking them. This is done by stepwise adjustment (sliding the adjustment rods from the shaft in increments of 20 mm and locking them with a latch fitted to the holes in the rods)

The height of a product is considered correct when the user has an upright posture when using the product, and the products works vertically, i.e. in the plane parallel to the body axis.



Mikirad Sp. z o.o.
26-600 Radom, ul. Małopolska 16
tel.: +48 48 383 08 85
+48 48 383 08 87



System zarządzania ISO 9001:2015
www.tuv.com ID 9105018398

II. PROCEDURE FOR STEPWISE ADJUSTMENT OF PRODUCT HEIGHT (Fig. 2)

1. Push the double latch out of the holes by pushing both fronts of the latch wings towards the back using two thumbs, so as to move the wings and slide the steel pegs out of the rod holes.

Do not bend the latch wings as they may break or lose elasticity.

2. Slide the adjustment rod along the axis to the appropriate height for the user; remember that the holes in the adjustment rod must ideally overlap the holes in the shaft.
3. Insert the steel pegs of the latch into the correctly positioned holes and push the latch using your hand until the inside surface of the latch is in full contact with the rod shaft.

In winter, use an anti-slip winter cap, which is universal.

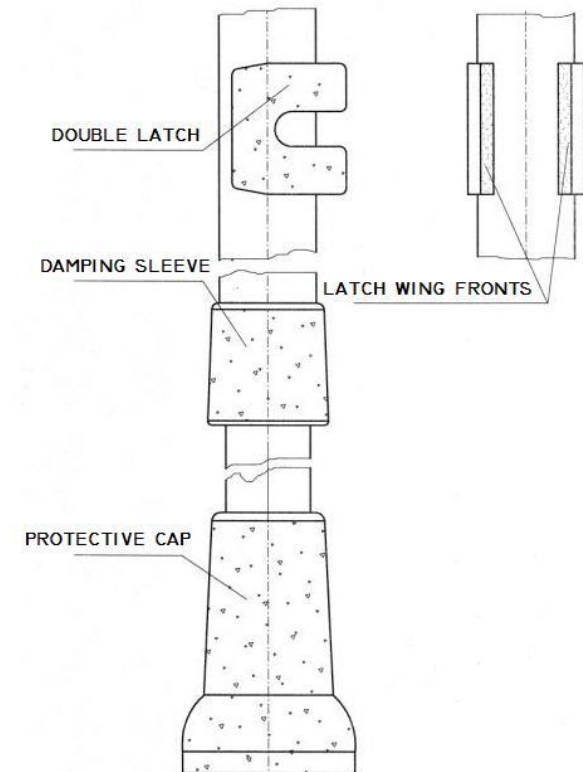


Fig.2 Stepwise adjustment

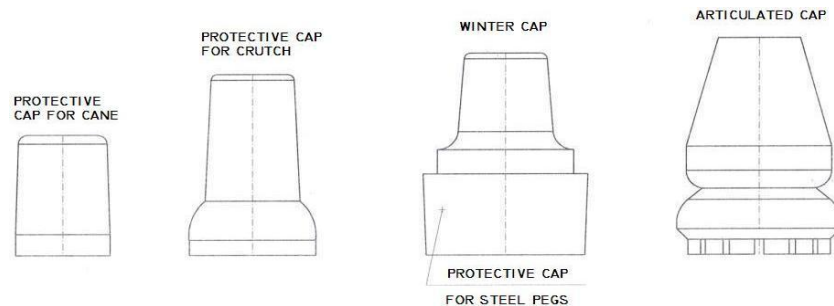


Fig.1 Protective cap